

Sale

Hard to find - opportunities with Spectacular View

* very low transfer costs *



Hillside development available complete as an investment which includes the following:

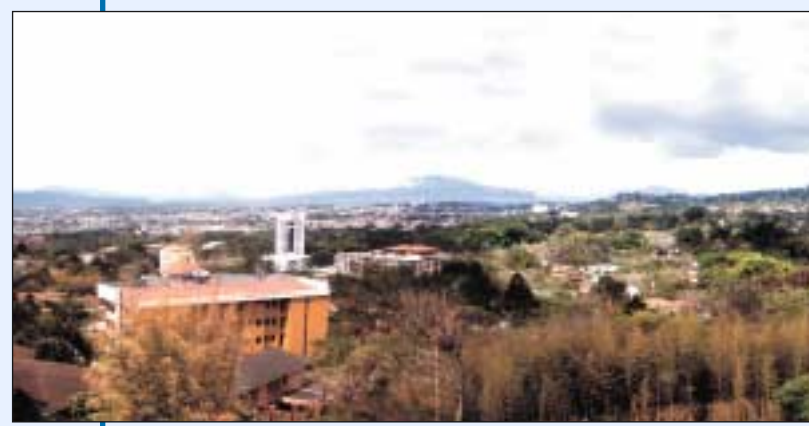
- 12 apartments in one building from 71.32 m² to 169 m²
- 10 houses from 155 m² to 688 m²
- View • Security • Private gardens • Privacy • Perfect climate all year round.



Million dollar view lot

- The last empty lot between luxurious condos and single family houses with large gardens.
- Area 12017.86 m² - 129,359 sq. ft.

Ready for a special development.



360° view

The only mountain top property in the center of Escazú's prestigious residential area

- Area 7910 m² - 85,152.39 sq. ft.

** Opportunity knocks **

Brokers Protected