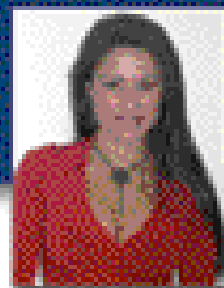


*Pioneers and Leaders in Administration
of Condominiums and Properties*



**RENTALS
&
SALES
272-0004**



Laura Zúñiga
Real Estate Director

Residential, Commercial and Industrial Properties



**San Pedro Betania
Plaza Universitaria**

Office and commercial business condominium, excellent location, parking lot, security, offices from 150 sqm.



San Pedro - Ofi Plaza del Este

Business complex with three buildings; excellent location; phone lines available; large parking, luxury finishing's, polirized windows.



Escazu - Ofi Centro Trilogía

Business complex: three 2,100 sqm. buildings; three stories each, 106 parking spaces per building, 200 phone lines per building, cable, air conditioning.



**Sabana Sur
Ofi Centro Ejecutivo La Sabana**

Office buildings in the most accessible area of San Jose. Private parking, garden areas, shared areas, internal road. Phone lines available.



Alajuela - Warehouse Complex

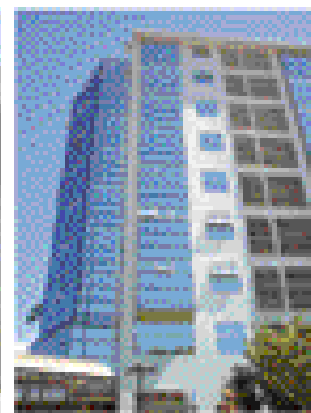
Seven warehouses in a strategic location, five minutes from the airport. Easy access for trucks, phone lines parking, 24 hours guard.

Lot. 21,918 sqm Const: 6000 sqm
Sale Price: \$2,200,000



Escazú - House

Guachipelín, modern house 800 sqm lot and 345 sqm const, fine finishings, three bedroom, 2.5 bath, jacuzzi, office, made room, terrace with garden, garage for two cars.
Sale Price \$300,000.00.



San Pedro - Condo

Nice condo, 210 sqm const, three bedroom, three bathrooms, made room with bath, two parking lot, great view to the city.
Rental Price: \$2,500.00
Sale Price: \$260,000.00.



Guachipelín, Escazú - Villas Malibu Condo

Modern condo, 326 sq. m. construction. Three bedrooms plus master bedroom with jacuzzi, two bathrooms plus guest bathroom, maid room, office, terrace, tennis court, swimming pool for adults and children, BBQ area, \$350,000.



Escazú - House

This beautiful house is built on 3,250 sqm lot, with 650 sqm three suites plus apartment, luxurious living room, terrace with swimming pool.
Sale Price \$965,000